

## "MYSTIC POWERBOATS - SL700"



**LOA:** 70' (21.3 m)

**Beam:** 16'11" (5.2 m)

**Draft:** Min 4' (1.2 m)

**Speed:** 60 mph@1875rpm / 80 mph@2350rpm

**Location:** DeLand, Florida, United States

**Year:** Mfg-2008 Model-2008

**Mfg:** MYSTIC POWERBOATS INC

**Model:** SL700

**Type:** Cruiser

Express

**Price:** 4,620,000USD

## Additional Specifications For MYSTIC POWERBOATS - SL700:

---

**LOA:** 70' (21.3 m)  
**Mfg. Length:**  
**LWL:**  
**LOD:**  
**Beam:** 16'11" (5.2 m)  
**Draft:** Min 4' (1.2 m)  
**Hull Mtrl:** Advanced Composites  
**Hull Cnfg.:** Deep Vee  
**Hull Designer:** John Cosker  
**Deck Mtrl:** Fiberglass Sandwich  
**Disp:** 57000 (25855 kg)  
**Ballast Weight:**  
**Ballast Type:**  
**Range:**  
**Fuel Cap:** 1000 g (3785 l)  
**Water Cap:** 166 g (628.3 l)  
**Holding Tank:** 101 g (382.3 l)  
**Flag:** US Coast Guard  
**Location:** DeLand, Florida, United States  
**Year:** Mfg-2008 Model-2008  
**Mfg:** MYSTIC POWERBOATS INC  
**Model:** SL700  
**Type:** Cruiser  
Express  
**Top:**  
Hardtop  
**Speed:** 60 mph@1875rpm / 80 mph@2350rpm  
**Engines:** 2xCaterpillar  
C32 ACERT  
1800 HP  
**Engines Year:** 2008  
**Staterooms:** 2  
**Sleeps:**  
**Heads:** 2  
**Crew Quarters:**  
**Crew Berths:** 1  
**Captain Cabin:** No  
**Price:**4,620,000USD

---

### **Remarks**

This entry is for the sale of a new construction. The unit shown is not for sale.

The Mystic SL700 is the world's first **70 ft - 70 knot (80 mph)** center console express cruising yacht. It is the first in a series of ultra hi-tech, high performance, luxury sport yachts by Mystic Powerboats of DeLand, Florida. With standard twin Caterpillar C32 ACERT diesels at 1,800 hp each and Arneson ASD-14 Surface Drives, this craft offers a spacious cockpit, a luxurious cabin and an incredible top speed of approximately 80 mph (70 kts). Mystic's twin stepped hull provides exceptional performance with a very dry ride as well as fuel efficiency. Higher horsepower options are available for even higher top speeds.

The first unit was delivered to its owner in October 2007. With standard Caterpillar C32 ACERT's, the boat gets **on plane in less than 10 seconds** (with no bow rise) and accelerates from **zero to 60 mph in 25 seconds**. It cruises at 60 mph at a comfortable and fuel efficient 1,875 RPM. Its Deep-V (24 degree deadrise at transom) provides a comfortable ride and excellent seakeeping characteristics in rough water. The unparalleled performance and quality of this craft ushered in an **entirely new era in the express boat technology** - far beyond anything offered by any company in the world.

The Mystic SL700 is available with either an enclosed air conditioned cockpit - or an open cockpit with windshield - or - an open cockpit with hardtop (as shown in photos of the first unit).

Mystic Powerboats was founded in 1996 by John Cosker with the goal of building the finest offshore powerboats in America. John has designed and built many of the world's most successful raceboats including the design, engineering and construction of a 50 ft turbine powered catamaran that was crowned Top Gun at the LOTO shootout three years in a row with a top speed in the 2007 event of 209 mph.

Working in advanced lightweight post-cured epoxy construction, the hulls are very light yet extremely strong. Construction follows very precise lamination schedules of carbon fiber materials as well as e-glass and aramid fabrics. All laminations are impregnated and vacuum bagged for light weight and maximum strength. All models are designed using state of the art computer 3-D modeling. Mystic's final products are genuine masterpieces.

For additional information, contact Everett Sutton at (305) 342-0587 or e-mail [EverettSutton@aol.com](mailto:EverettSutton@aol.com). The Mystic SL700 can be seen at Mystic's website [www.mysticpowerboats.com](http://www.mysticpowerboats.com). Mystic's new factory and offices are located in DeLand Florida.

### ***MYSTIC SL700 SPECIFICATIONS:***

**Design:** Twin stepped bottom - Deep-V 24 degree deadrise at transom.

**Construction:** Epoxy lamination using e-glass cloths over foam cores with carbon fiber reinforcements.

Fully vacuum bagged and post-cured to laminate specifications.

Airex foam core bulkheads .

Hull/ deck joints bonded inside and out.

Hull and deck faired, primed and painted in AwlCraft 2000 paint.

Engine room painted in Snow White AwlGuard Interior Urethane paint.

**Cockpit Configurations:** Available with Fully enclosed air-conditioned cockpit - OR - Open cockpit with carbon fiber hardtop - OR - Open cockpit with windshield.

**Length Overall:** 70 ft (21.3m)

**Hull Length:** 62 ft 11 in (19.2m)

**Beam, Max:** 16 ft 10 in (5.13m)

**Dry Weight:** 57,000 lb (25,855k) approx with Cat C32 ACERT engines.

**Draft (light):** 4 ft (1.22m) approx

**Fuel Tank Capacity:** 1000 gal (3,785L)

**Fresh Tank Water Capacity:** 166 gal (628L)

**Waste Tank Capacity:** 100 gal (378L)

## **Engine /Mechanical Equipment**

### **PROPULSION:**

Standard Engines are twin turbo Caterpillar C32 Acert diesels at 1,800 bhp each for a top speed of 80 mph (70 kts)\*. Higher horsepower is available at additional cost for higher speeds. Turbine packages are also available.

Twin Disc MGX-6599A Quickshift Transmissions.

Twin Disc/ Arneson ASD-14 Surface Drives.

Custom Propulsion Systems 6 blade Nibrall propellers.

*\* Speeds are approximate and vary with load, outfitting, sea conditions, etc.*

### **CONTROL:**

Digital engine instrumentation.

Electronic shift and throttle controls.

Power steering.

High gloss wood steering wheel with tilt helm.

Illuminated weather proof switch panels.

### **GENERAL FEATURES:**

Stainless steel dual inlet water pickups.

3" Bronze raw water inlet seacocks - (2) at transom & (2) at strainers.

Stainless steel sea strainers with removable baskets.

Bonding system with (2) zinc hull plates.

Carbon fiber trim tabs with stainless steel hydraulic trim cylinders.

### **ENGINE ROOM FEATURES:**

Carbon fiber engine girders with stainless steel beds.

Rule 1100 GPH pump - centerline aft.

Rule 3700GPH pumps (2) aft - (1) forward.

Ventilation blowers - (2) 24 volt.

Fire suppression system - automatic engine shutdown, override and manual.

Engine room noise insulation - 2" with vinyl covering.

Engine room light - (4) 24 volt.

Reverso Oil change system - Main engines, transmissions, generator.

**FUEL SYSTEM:**

1,000 gal integral fuel tank with areospace grade tank coating.

Fuel shutoff valves at tank.

Electronic fuel level sending units.

USCG approved fuel lines.

Main engine Racor 75500MAX fuel filters - 60/120 GPH - (2).

Generator Racor 120RMAM Fuel filter- 15 GPH - (1).

**WATER SYSTEM:**

166 gal Kracor rotomolded plastic water tank.

Electronic water level sending unit.

Headhunter Mach-5 water pump – (1) 240V.

Headhunter X-Caliber water pump – (1) 24V.

Headhunter Puffer Accumulator tanks (2).

Aft cockpit shower with hot & cold water.

Fresh water hose spigot in anchor locker.

Fresh water hose spigot in engine room.

Dockside fresh water inlet.

Water filters at each sink.

Hot water heater – Isotemp by Indel 19.7 gal (74.6L) – 240V.

**WASTE SYSTEM:**

100 Gal Karacor rotomolded plastic waste tank.

Electronic waste level sending unit.

Dockside pumpout deck fitting.

Macerator pump with auto seacock – (1) 240V.

Cabin sump pump – showers, sinks, AC condensation – (1) 24V.

Raritan Atlanes toilets with integral macerators.

## **Accommodations**

### **GENERAL:**

Cabin layouts are custom designed to meet each owner's preferences to the extent that they are within parameters that meet structural requirements.

Cabin air conditioning is included in the base price – (2) Cruisair 24,000 BTU airconditioning systems – 240V – Condensers in engine room.

### **SALON:**

Ultraleather sofa with storage compartment below.

Storage compartments with hatches in cabin floor.

Stereo system w/ DVD player – Bose 3-2-1

TV – Flat screen LCD HD

### **GALLEY:**

Granite countertops w/ undercounter drawers.

AC/DC refrigerator/ freezer.

Stainless steel microwave & 240V three burner cook top.

Upper and lower storage cabinets.

Stainless steel galley sink & faucet.

### **MASTER STATEROOM:**

Queen size bed with storage below.

Full length hanging locker.

Dresser with drawers and storage cabinets.

Stereo System – Bose Lifestyle 18.

TV – Flatscreen LCD HD.

### **MASTER HEAD:**

Vanity with granite countertop.

Mirrored medicine cabinet.

Raritan 24V toilet.

Separate large shower.

**STBD GUEST STATEROOM:**

Full size bed with storage below.

Full length hanging locker.

Stereo System – Bose 3-2-1.

TV – Flatscreen LCD HD.

**PORT GUEST STATEROOM:**

Twin bunk beds.

Stereo System – Bose 3-2-1.

TV – Flatscreen LCD HD.

**GUEST HEAD:**

Wet head with integral shower.

Vanity with granite countertop.

Mirrored medicine cabinet.

Raritan 24V toilet.

**Cockpit**

Large engine hatch lift – hydraulically actuated.

Space to store an inflated tender & motor beneath the aft sunpad – easy access to the swim platform for launch & recovery.

Stereo system – Clarion/ JL Audio 10 speaker, 3 amplifier – described in detail below.

Tempered glass canopy windows.

Sliding carbon fiber sunroof (for enclosed cockpit version).

Removable cockpit dining table.

Integral fiberglass seat bases w/ storage below.

Storage compartments with hatch covers in cockpit floor.

AC/DC Cockpit refrigerator with icemaker.

Overhead and courtesy lighting (24V).

12V Accessory outlet.

120V GFI outlet.

Aft cockpit shower with hot & cold water.

Stainless steel drink holders with drains.

## **Deck Equipment**

Low profile stainless steel bowrails.

Stainless steel anchor.

Anchor chain -100 ft (30.5m)

Anchor windlass – cockpit control and deck switches.

Anchor wash down.

Pull up cleats (8).

Stainless steel fuel, water and waste deck fittings.

Bomar deck hatch.

Stainless steel rubrail.

Navigation and anchor lights.

Integral engine room air intake and vent system.

Hidden air horn – 24V – w/ air tank and compressor.

## **Electrical System**

E-Plex electronic control system.

Four Optima 31 Series start batteries.

ProMariner Pronautic 2430 engine room battery charger – 24V.

Four Optima 31 Series house batteries.

Vanner 65-100, 100 amp battery equalizer.

ProMariner Pronautic 2430 house battery charger – 24V.

Battery switches – (2) 24V House – (2) 24V Start.

DC Breaker panels in waterproof enclosure – engine room – cockpit – cabin.

AC Breaker panels in aluminum enclosures in cabin.

240V 50 Amp Shore power connection w/ 50 ft (15.25m) shore power cord.

ProMariner ProSafe One 50 amp galvanic isolator.



Onan 17kW 60 Hz diesel generator – remote start – soundshield – muffler.

## **Electronics and Navigational Equipment**

### **NAVIGATION:**

Garmin GSPMAP 5215 Chartplotter 15” color touch screen.

Garmin GSD 21 Analog depth sounder black box.

Airmar 1 kW dual frequency bronze thru-hull transducer w/ temp.

Icom IC-M422 VHF Marine Transceiver w/DSC

### **COCKPIT STEREO:**

Clarion CMD5 watertight marine stereo.

Clarion CMRC1-BSS watertight stainless steel remote control (2).

Clarion M101RYC-RET “Y” adapter for multiple remotes.

JL Audi M770-TCX Tower Coaxial Speakers (8).

JL Audio 101BS-4 10 inch Subwoofers (2).

JL Audio M4300 Four channel speaker amplifier (2).

JL Audio M1400 Monoblock subwoofer amplifier (1).

### ***OPTIONS AVAILABLE AT ADDITIONAL COST:***

Cockpit air conditioning – (1) Cruisair 24,000 BTU.

Bow thruster - Vetus BOW125 – 24V – 10” tunnel.

Stern thruster – Vetus BOW125 – 24V – 10” tunnel.

Autopilot – Simrad 26.

Radar – Garmin GMR 24 4kW 48nm.

Satellite Weather – Garmin GDL 30/30A XM Satellite weather data.

E-Plex 5.7” Color dash touch screen control.

E-Plex 10” Color cabin touch screen control.

Satellite TV – KVH TracVision MS Marine – 18” dome.

Satellite phone & Internet – KVH TracPhone F33 – 18” dome.

Underwater lighting – Sea Vision SV10 – 230VAC – 150 watt – (2) lights

Searchlight – ACR RCL-100D remote control spotlight.

Clarion SIRCL3 Sirius satellite radio interface for cockpit stereo.

Clarion EA1276 iPod interface for cockpit stereo.

AwlGrip AwlStar hull bottom anti-fouling paint.

Poseidon Lift hydraulic swim platform.

**SL700 Hardtop**



**SL700 Hardtop – Transom view**



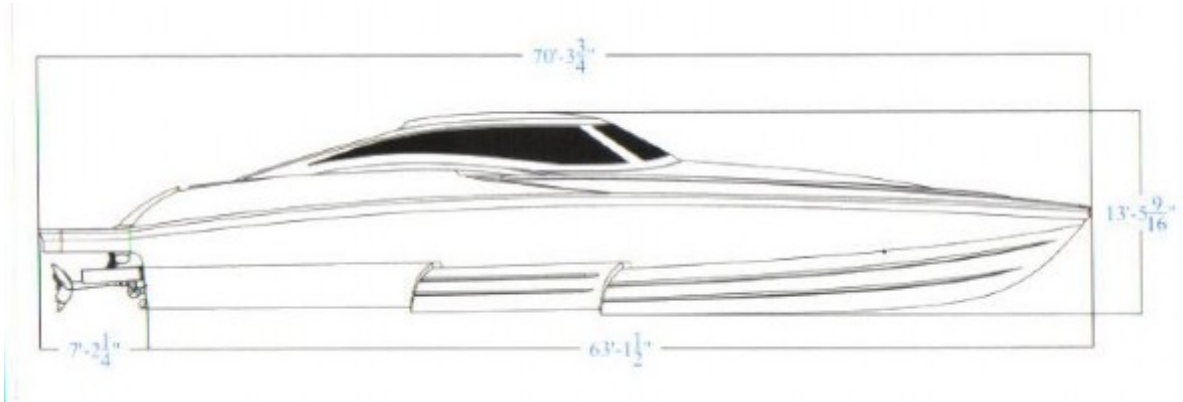
## SL700 Profile



## Hull Size Perspective



## SL700 Enclosed / Open Cockpit Profile



## With Stripe and white portholes



**Engines & Hydraulic Lift**



**Galley to Port - Sofa Stbd**



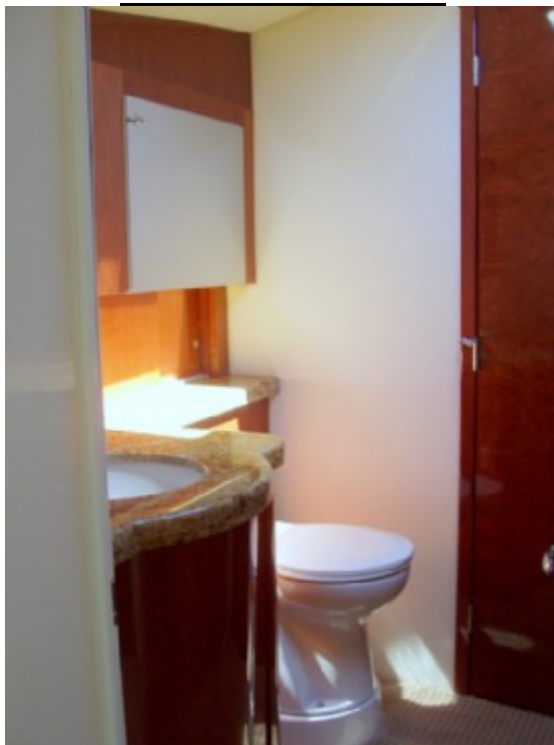
## Galley



## Salon Sofa / Queen bed



**Master Head - Stbd**



**Master Head - Port**





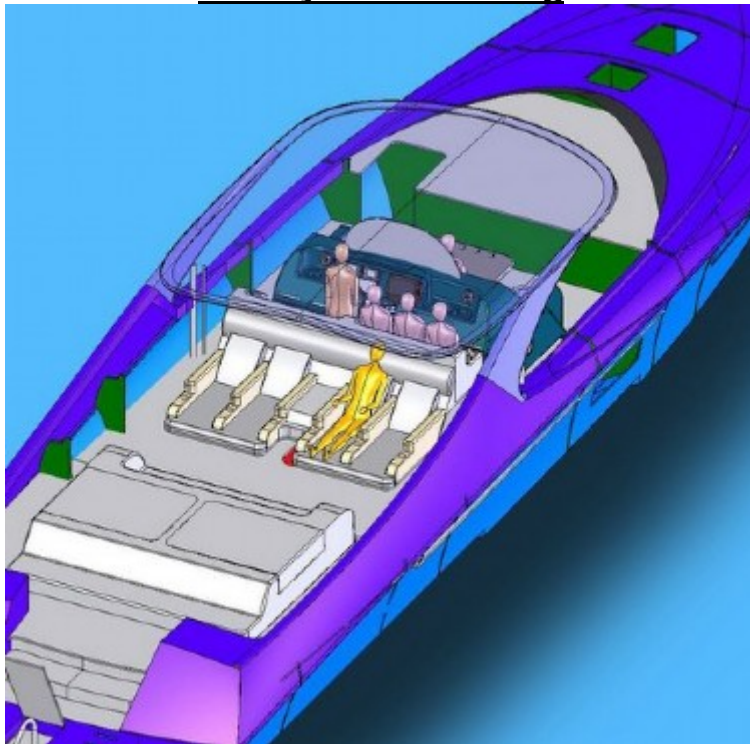
Dayhead



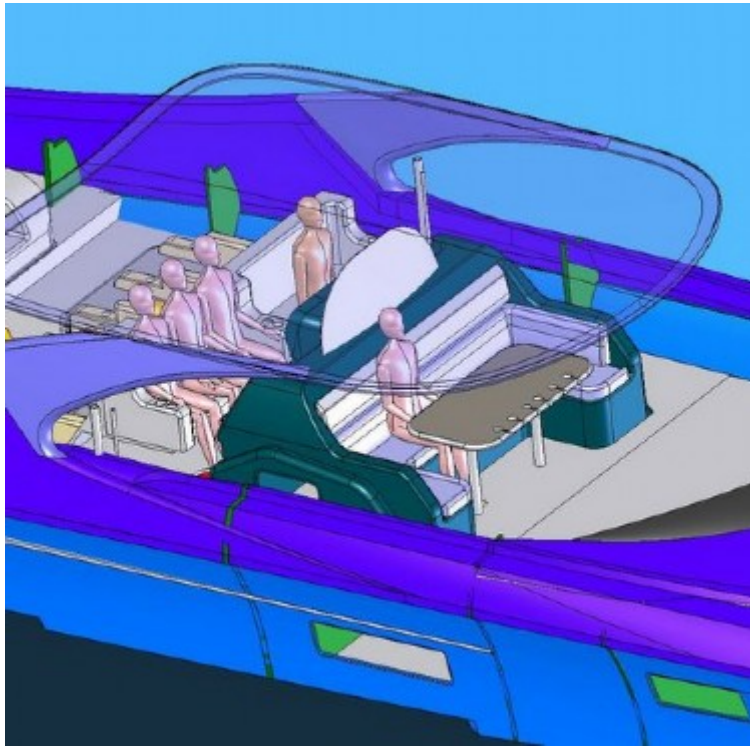
**Aft Bunkroom**



**Aft Layout Rendering**



## Fwd Layout Rendering



## Chaise Lounge Seats



**Transom Seat/ Sunpad**



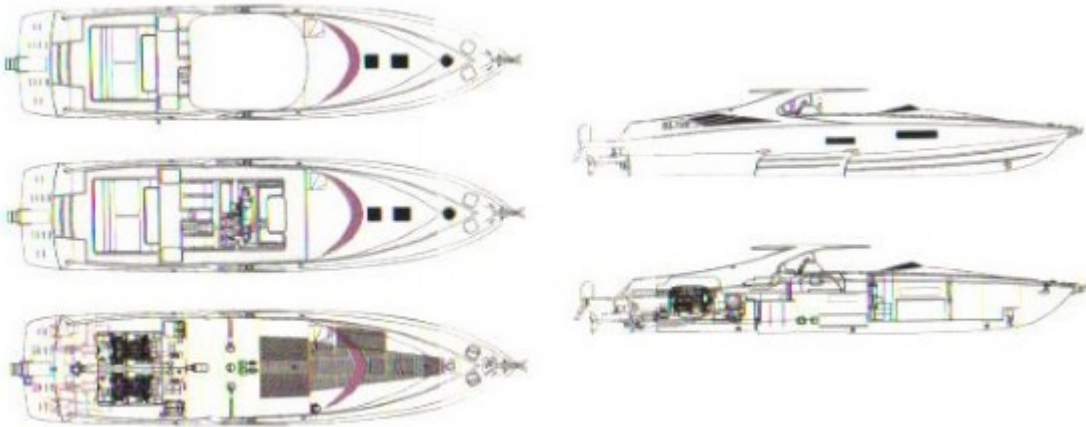
**Fwd Cockpit dining Table**



## Helm Console Controls



## Other



Everett Sutton  
Robert Dean & Associates Yacht Brokerage

Tel: 305-342-0587 Fax: 305-259-4710 [everettsutton@aol.com](mailto:everettsutton@aol.com)

*MYSTICPOWERBOATS SL 700*